



St. Dominic's Place

Hartshill, Stoke on Trent ST4 7LY

Specification

- Living room with walk in bay
- Fitted dining/kitchen with built in stainless steel oven, hob & hood, integrated fridge-freezer, dishwasher & washing machine
- Downstairs cloakroom
- White sanitary ware with chrome taps
- Main bedroom with en-suite
- Built in wardrobes to two bedrooms
- Turfed front garden and turfed rear garden with patio area and close board fencing
- White PVCu double glazed windows and French doors
- High efficiency gas boiler heating with panel radiators
- 10 year Premier New Homes Warranty

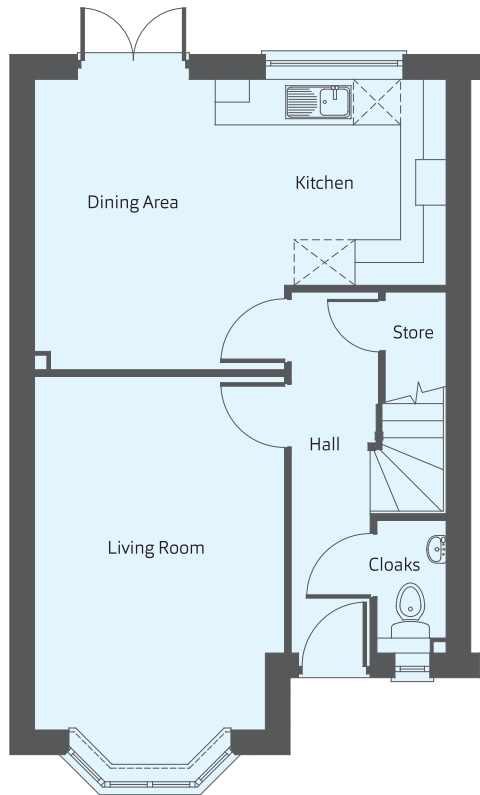
THE CHESLYN
Three bedroom home



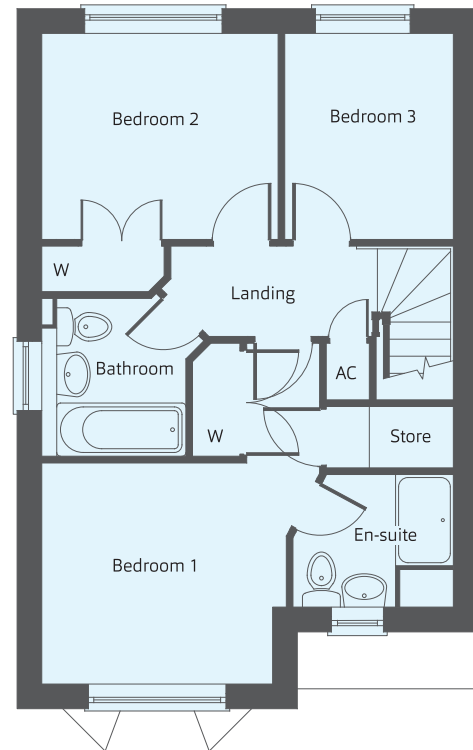
THE CHESLYN

Three bedroom home

Building quality homes
to be proud of...



Ground Floor



First Floor

Dimensions

Kitchen/Dining	3.82m x 3.29m	12'7" x 10'10"
Living Room	4.66m x 3.29m	15'3" x 10'10"
Cloakroom	1.75m x 0.90m	5'9" x 2'11"
Bedroom 1	2.91m x 3.04m	9'7" x 10'0"
En-suite	1.75m x 2.03m	5'9" x 6'8"
Bedroom 2	2.71m x 3.11m	8'11" x 10'3"
Bedroom 3	2.71m x 2.22m	8'11" x 7'3"
Bathroom	1.91m x 1.89m	6'3" x 6'2"