

St. Dominic's Place

Hartshill, Stoke on Trent ST4 7LY

Specification

- Living room with walk in bay
- Open plan dining/kitchen with built in stainless steel oven, hob & hood, integrated fridge-freezer, dishwasher & washing machine
- Downstairs cloakroom
- White sanitary ware with chrome taps
- Main bedroom with en-suite
- Family bathroom with bath and shower
- Built in wardrobes to two bedrooms
- Turfed front garden and turfed rear garden with patio area and close board fencing
- White PVCu double glazed windows and French doors
- High efficiency gas boiler heating with panel radiators
- 10 year Premier New Homes Warranty

THE PATTINGHAM

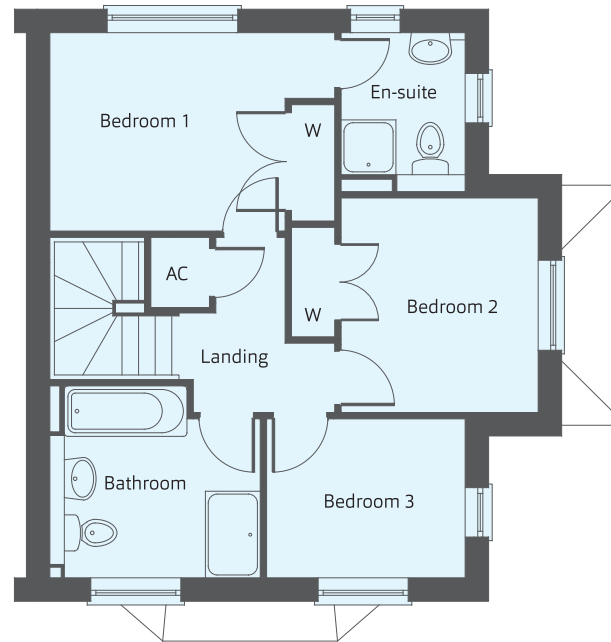
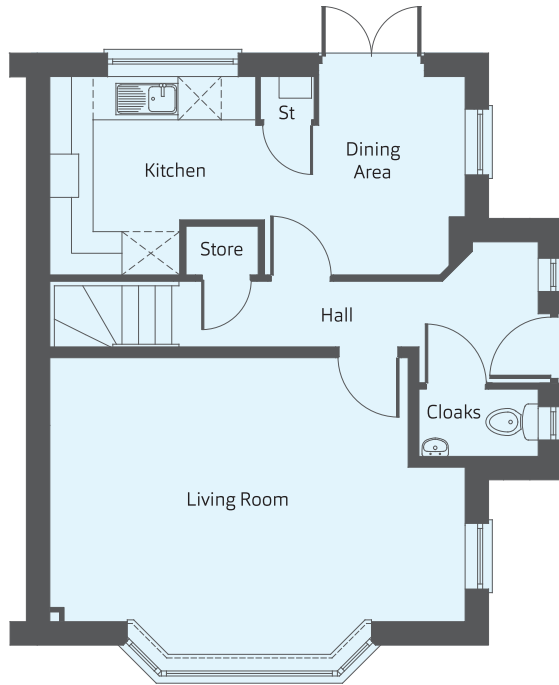
Three bedroom home



THE PATTINGHAM

Three bedroom home

Building quality homes
to be proud of...



Ground Floor

First Floor

Dimensions

Kitchen/Dining
5.80m x 2.78m 19'1" x 9'2"

Living Room
5.80m x 3.70m 19'1" x 12'2"

Cloakroom
0.95m x 1.60m 3'2" x 5'3"

Bedroom 1
3.94m x 2.75m 13' x 9'0"

En-suite
2.00m x 1.72m 6'7" x 5'8"

Bedroom 2
2.97m x 2.73m 9'9" x 9'

Bedroom 3
2.75m x 2.20m 9' x 7'3"

Bathroom
2.63m x 2.38m 8'8" x 7'10"