



# St. Dominic's Place

Hartshill, Stoke on Trent ST4 7LY

## Specification

- Front facing living room
- Fitted dining/kitchen with built in stainless steel oven, hob & hood, integrated fridge-freezer, dishwasher & washing machine.
- French doors to the garden
- Downstairs cloakroom
- Under stairs store
- White sanitary ware with chrome taps
- Built in wardrobes to two bedrooms
- Turfed front garden and turfed rear garden with patio area and close board fencing
- White PVCu double glazed windows and French doors
- High efficiency gas boiler heating with panel radiators
- 10 year Premier New Homes Warranty

# THE SIESDON

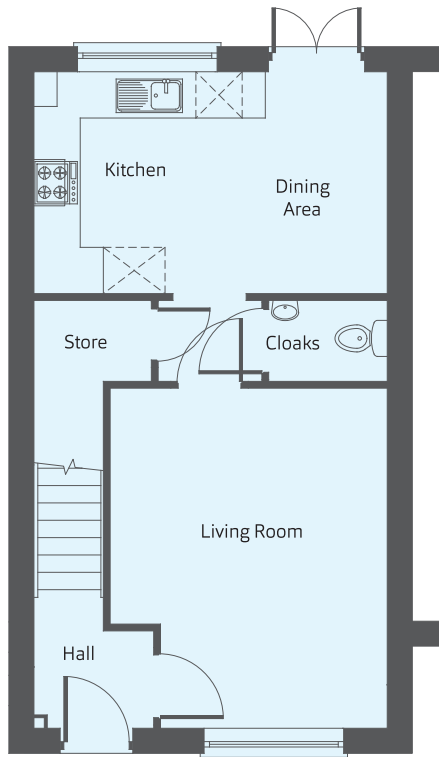
Three bedroom home



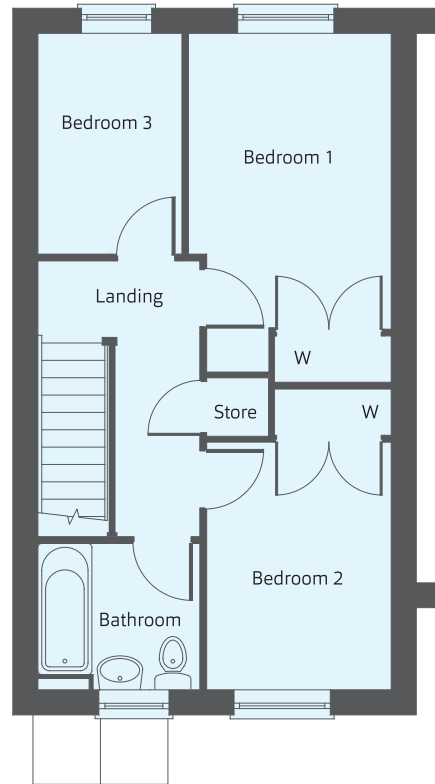
# THE SEISDON

Three bedroom home

Building quality homes  
to be proud of...



Ground Floor



First Floor

## Dimensions

### Kitchen/Dining

4.58m x 2.87m 15' x 9'5"

### Living Room

4.41m x 3.59m 14'6" x 11'10"

### Cloak Room

1.03m x 1.55m 5'1" x 3'5"

### Bedroom 1

3.83m x 2.62m 12'7" x 8'7"

### Bedroom 2

3.21m x 2.39m 10'7" x 7'10"

### Bedroom 3

2.86m x 1.86m 9'5" x 6'2"

### Bathroom

2.12m x 2.10m 7'0" x 6'11"