



St. Dominic's Place

Hartshill, Stoke on Trent ST4 7LY

Specification

- Living room with walk in bay
- Open plan dining/kitchen and family room with built in stainless steel oven, hob & hood, integrated fridge-freezer, dishwasher & washing machine
- Downstairs cloakroom
- White sanitary ware with chrome taps
- Main bedroom with en-suite
- Family bathroom with bath and shower
- Built in wardrobes to three bedrooms
- Turfed front garden and turfed rear garden with patio area and close board fencing
- White PVCu double glazed windows and French doors
- High efficiency gas boiler heating with panel radiators
- 10 year Premier New Homes Warranty

THE HIMLEY

Four bedroom home

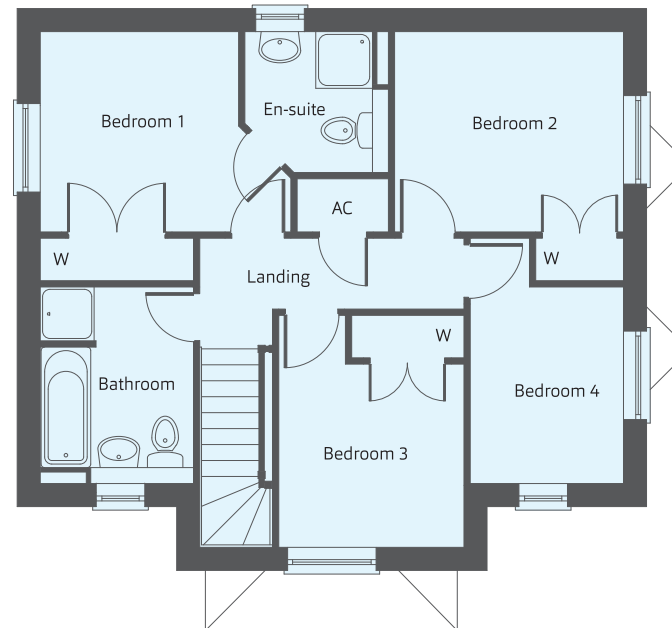
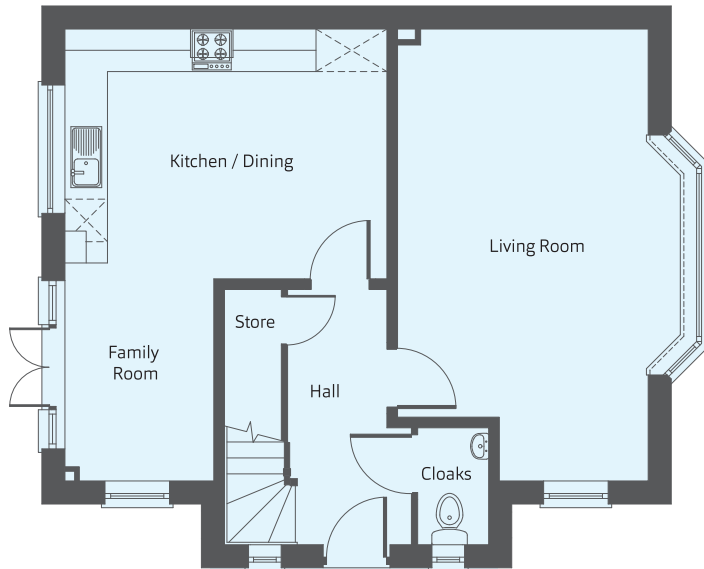


Dunedin Homes
& Developments

THE HIMLEY

Four bedroom home

Building quality homes
to be proud of...



Ground Floor

First Floor

Dimensions

Kitchen/Dining	4.54m x 3.52m	14'11" x 11'7"
Living Room	6.37m x 3.52m	20'11" x 11'7"
Family Room	2.85m x 2.10m	9'4" x 6'10"
Cloak Room	1.60m x 1.00m	5'3" x 3'3"
Bedroom 1	2.82m x 2.79m	9'3" x 9'2"
Ensuite	1.78m x 2.02	5'10" x 6'8"
Bedroom 2	3.22m x 2.82m	10'7" x 9'3"
Bedroom 3	2.61m x 2.58m	8'7" x 8'6"
Bedroom 4	2.77m x 2.16m	9'1" x 7'1"
Bathroom	2.91m x 2.16m	9'7" x 7'1"