



# St. Dominic's Place

Hartshill, Stoke on Trent ST4 7LY

## Specification

- Living room with walk in bay
- Open plan kitchen with built in stainless steel oven, hob & hood, integrated fridge-freezer, dishwasher & washing machine and dining area with french doors to the garden
- Downstairs cloakroom
- White sanitary ware with chrome taps
- Main bedroom with en-suite
- Family bathroom with bath and shower
- Built in wardrobes to all bedrooms
- Turfed front garden and turfed rear garden with patio area and close board fencing
- White PVCu double glazed windows and French doors
- High efficiency gas boiler heating with panel radiators
- 10 year Premier New Homes Warranty

# THE TRESCOTT

Four bedroom home

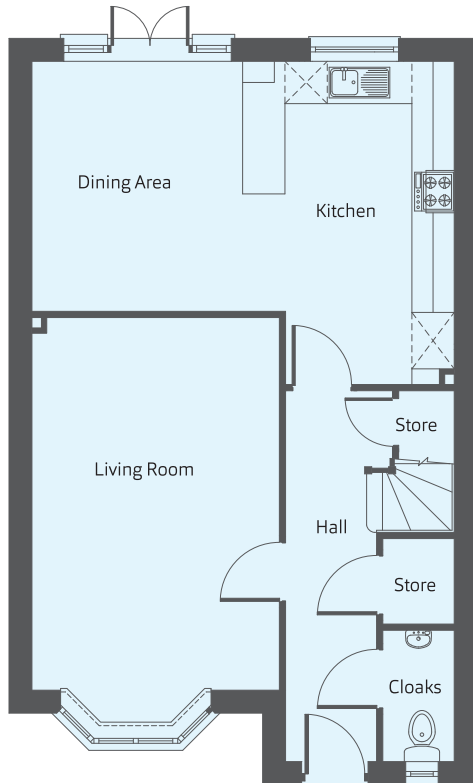


**Dunedin Homes**  
& Developments

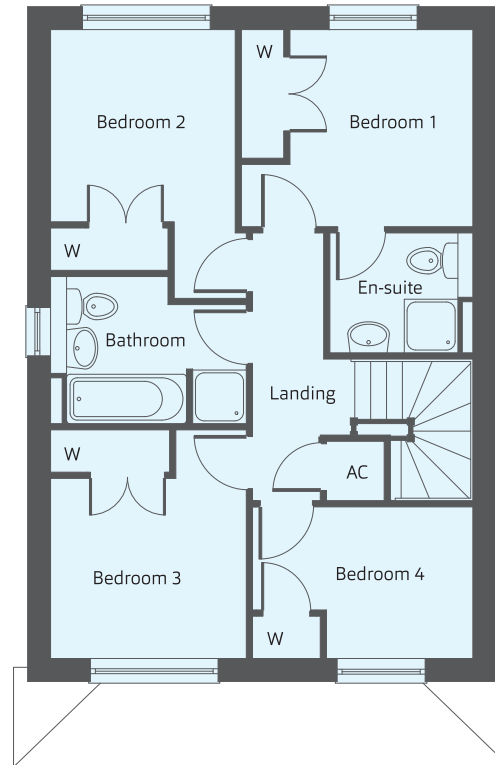
# THE TRECOTT

Four bedroom home

Building quality homes  
to be proud of...



Ground Floor



First Floor

## Dimensions

**Kitchen/Dining**  
5.98m x 4.58m      19'8" x 15'1"

**Living Room**  
5.28m x 3.50m      17'4" x 11'6"

**Cloakroom**  
1.86m x 1.01m      6'1" x 3'4"

**Bedroom 1**  
2.79m x 2.60m      9'2" x 8'7"

**Ensuite**  
1.70m x 2.03m      5'7" x 6'8"

**Bedroom 2**  
2.72m x 2.61m      8'11" x 8'7"

**Bedroom 3**  
2.77m x 2.55m      9'1" x 8'5"

**Bedroom 4**  
3.12m x 2.15m      10'3" x 7'1"

**Bathroom**  
2.08m x 2.78m      6'10" x 9'1"