

# St. Dominic's Place

Hartshill, Stoke on Trent ST4 7LY

## Specification

- Open plan living room and dining room, both with french doors to the garden
- Kitchen with built in stainless steel oven, hob & hood, integrated fridge-freezer, dishwasher & washing machine
- White sanitary ware with chrome taps
- Main bedroom with en-suite
- Family bathroom with bath and shower
- Built in wardrobes to all bedrooms
- Integral garage
- Turfed front garden and turfed rear garden with patio area and close board fencing
- White PVCu double glazed windows and French doors
- High efficiency gas boiler heating with panel radiators
- 10 year Premier New Homes Warranty

# THE ENVILLE

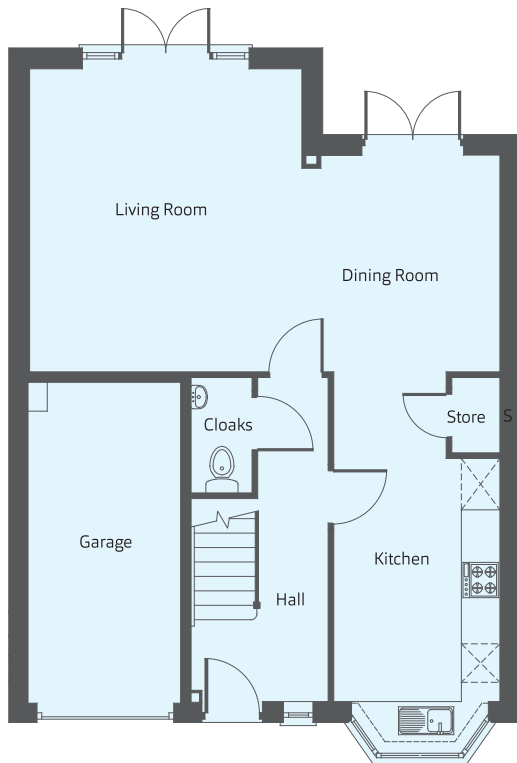
Four bedroom home



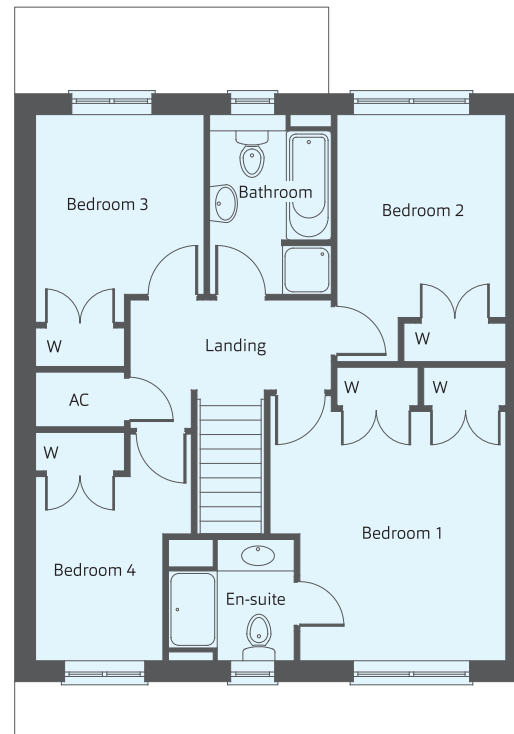
# THE ENVILLE

Four bedroom home

Building quality homes  
to be proud of...



Ground Floor



First Floor

## Dimensions

<b>Kitchen</b>	3.78m x 2.58m	12'5" x 8'6"
<b>Living/Dining</b>	7.32m x 4.72m	24'1" x 15'6"
<b>Cloakroom</b>	1.80m x 0.95m	5'11" x 3'1"
<b>Bedroom 1</b>	3.88m x 3.67m	12'9" x 12'1"
<b>Ensuite</b>	1.89m x 1.96m	6'2" x 6'5"
<b>Bedroom 2</b>	3.16m x 2.63m	10'5" x 8'8"
<b>Bedroom 3</b>	3.23m x 2.62m	10'7" x 8'7"
<b>Bedroom 4</b>	2.87m x 1.98m	9'5" x 6'6"
<b>Bathroom</b>	2.80m x 1.89m	9'2" x 6'3"