



St. Dominic's Place

Hartshill, Stoke on Trent ST4 7LY

Specification

- Open plan living room and dining room, both with french doors to the garden
- Kitchen with built in stainless steel oven, hob & hood, integrated fridge-freezer, dishwasher & washing machine
- White sanitary ware with chrome taps
- Main bedroom with en-suite
- Family bathroom with bath and shower
- Built in wardrobes to all bedrooms
- Integral garage
- Turfed front garden and turfed rear garden with patio area and close board fencing
- White PVCu double glazed windows and French doors
- High efficiency gas boiler heating with panel radiators
- 10 year Premier New Homes Warranty

THE STRETTON

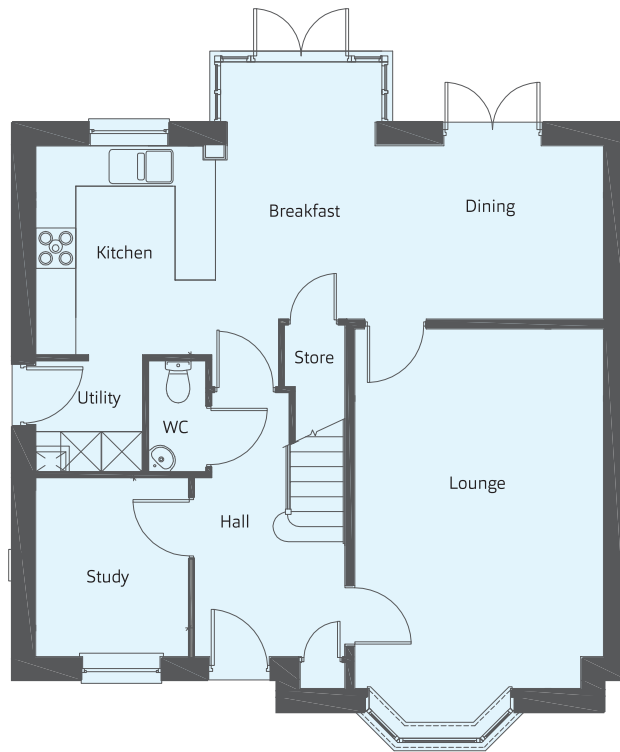
Four bedroom home



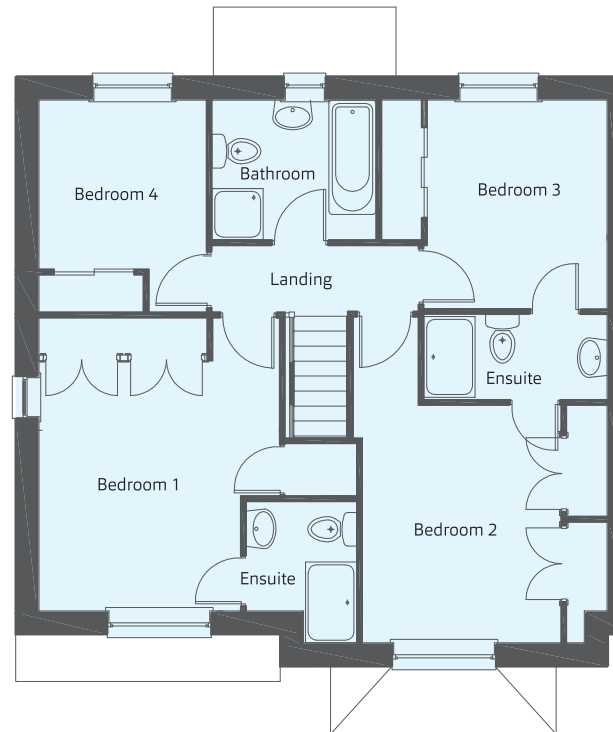
THE STRETTON

Four bedroom home

Building quality homes
to be proud of...



Ground Floor



First Floor

Dimensions

Kitchen/Breakfast/Dining

8.45m x 3.11m 27'9" x 10'3"

Living Room

5.34m x 3.70m 17'7" x 12'2"

Study

2.66m x 2.27m 8'9" x 7'6"

Cloakroom

1.00m x 1.68m 3'3" x 5'5"

Bedroom 1

3.72m x 3.57m 12'3" x 11'9"

Ensuite

1.28m x 2.72m 4'2" x 8'10"

Bedroom 2

3.53m x 2.95m 11'7" x 9'8"

Bedroom 3

3.12m x 2.68m 10'3" x 8'10"

Bedroom 4

2.51m x 2.48m 8'3" x 8'2"

Bathroom

2.41m x 2.04m 7'10" x 6'7"